

PRODUCT INFORMATION PACKET

Model No: 213THTS8071
Catalog No: Y990
7 1/2,1800,TENV,213TC,3/60/230/460
2000:1 Brake Motor



Regal and Marathon are trademarks of Regal Beloit Corporation or one of its affiliated companies.
©2019 Regal Beloit Corporation, All Rights Reserved. MC017097E





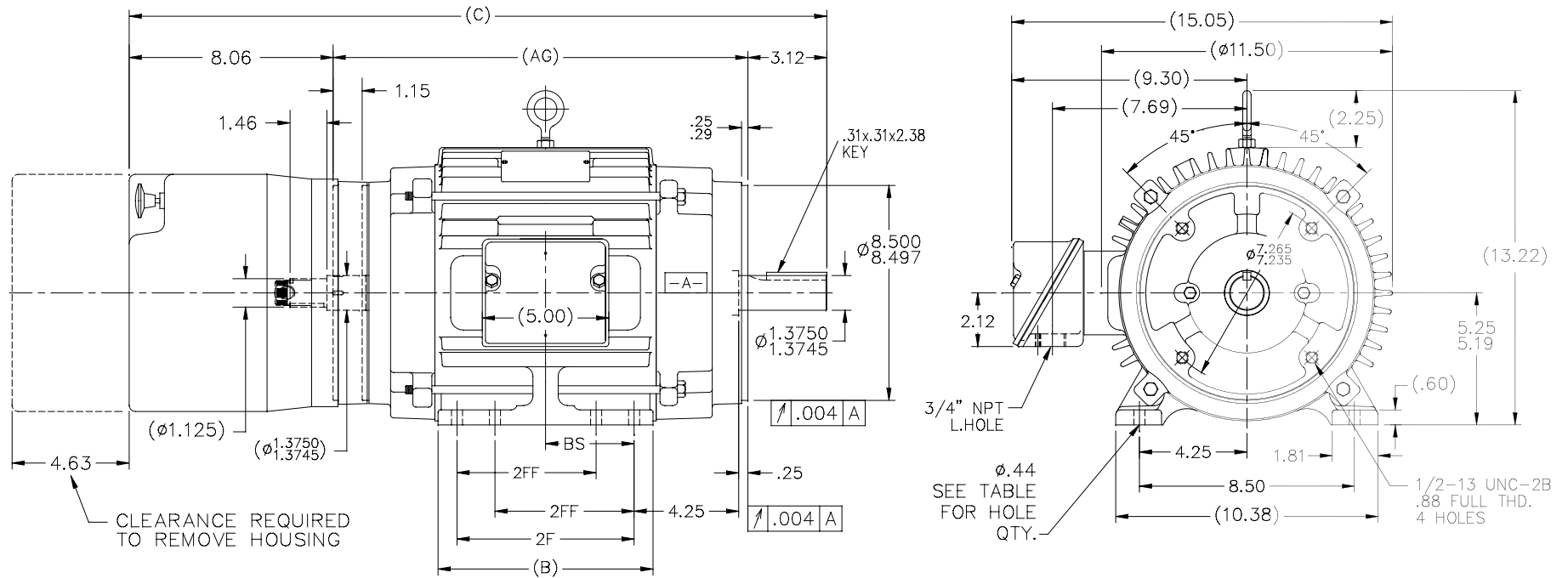
Nameplate Specifications

Output HP	7.50 HP	Output KW	5.6 kW
Frequency	60 Hz	Voltage	230/460 V
Current	21.0/10.5 A	Speed	1775 RPM
Service Factor	1	Phase	3
Efficiency	90.2 %	Duty	Continuous
Insulation Class	F	Design Code	INV
KVA Code	L	Frame	213TC
Enclosure	Totally Enclosed Non Ventilated	Overload Protector	No
Ambient Temperature	40 °C	Drive End Bearing Size	6309
Opp Drive End Bearing Size	6307	UL	Recognized
CSA	Y	CE	Y
IP Code	43		

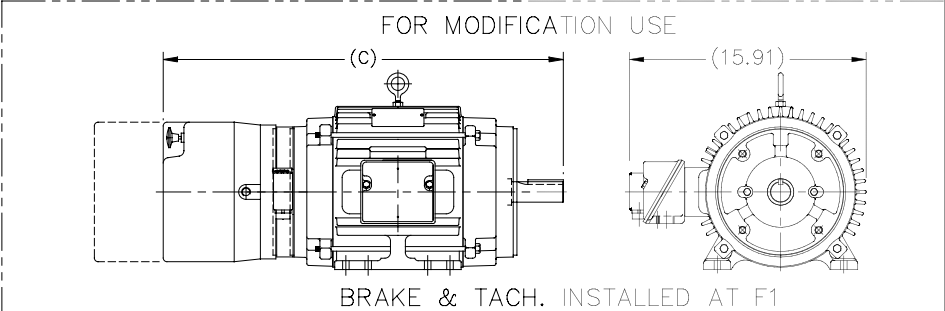
Technical Specifications

Electrical Type	Squirrel Cage Inverter Duty	Starting Method	Inverter Only
Poles	4	Rotation	Reversible
Mounting	Rigid Base	Motor Orientation	Horizontal
Drive End Bearing	Ball	Opp Drive End Bearing	Ball
Frame Material	Cast Iron	Shaft Type	T
Overall Length	27.58 in	Frame Length	8.75 in
Shaft Diameter	1.375 in	Shaft Extension	3.12/1.46 in
Assembly/Box Mounting	F1/F2 Capable		
Outline Drawing	B-SS88470-875	Connection Diagram	A-EE7308T

This is an uncontrolled document once printed or downloaded and is subject to change without notice. Date Created: 08/27/2019



- NOTES:
1. CONDUIT BOX CAN BE ROTATED IN 90° STEPS.
 2. CONDUIT BOX CAN BE MOUNTED ON OPPOSITE SIDE BY REMOVING BRACKETS AND TURNING FRAME 180°
 3. NAMEPLATE TO BE READ FROM CONDUIT BOX SIDE OF MOTOR

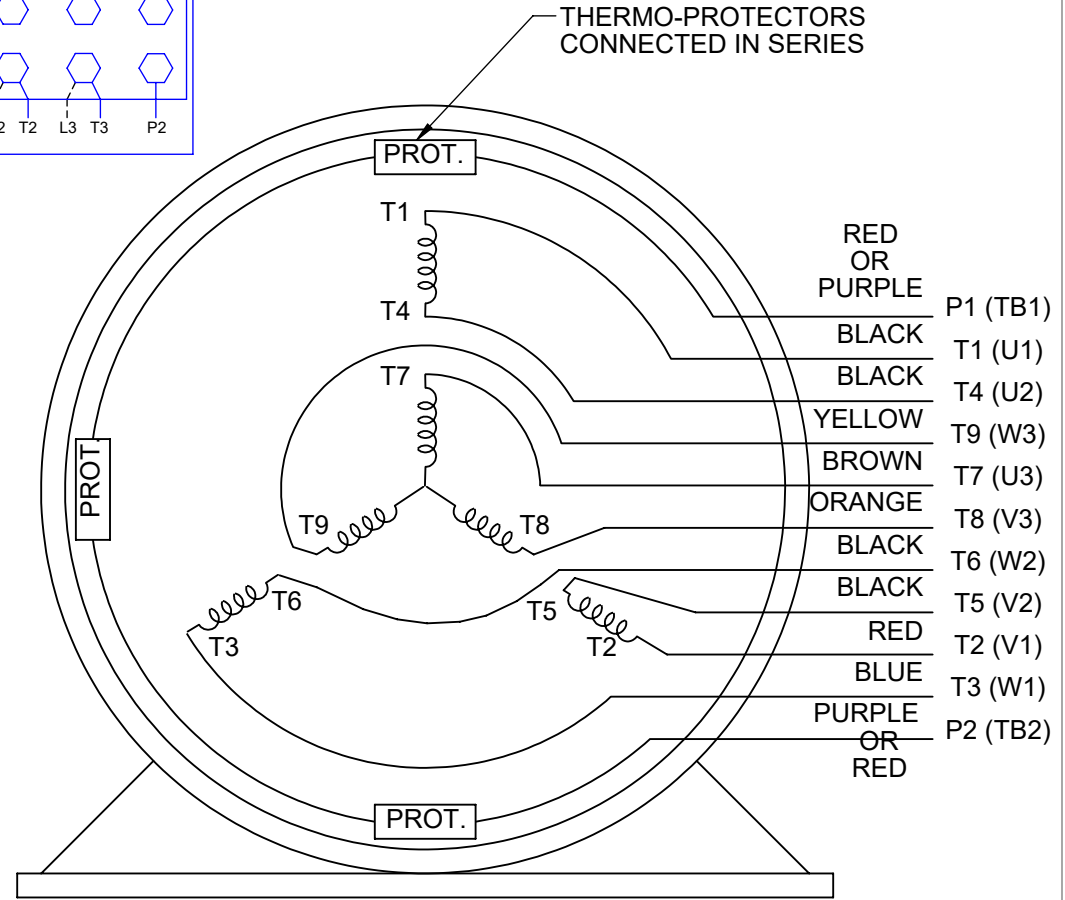


9	NOTES UPDATED PER ECR# 0082550	SAJ 04/13/2015	GR	TOLERANCES UNLESS SPECIFIED		DRAWN DAH 06-18-2001	
8	UPDATED DRAWING	TJW 05/04/2007	DEC.	INCHES		CHK DRS 07-02-2001	
7	REVISED DASH 1000-FOOTHOLE CN29100-4873	RJW 10-24-2005	ML .X	±.1	APPD CAV 07-02-2001		
6	REVISED DASH TABLE & FOOT HOLE QTY. CN33822	RJW 05-12-2005	ML .XX	±.03		SCALE 1=4	
5	ADDED NOTE NUMBER 4 CN32977	RJW 02-08-2005	ML .XXX	±.005		REF	
4	ADD NOTE TO DETAIL & SEPARATE CN33633	RWR 10-07-2004	ML .XXXX	±.0005		FMF	
NO.	REVISION	BY & DATE	CHK ANG	±7°30"		PREV	
THIS DRAWING IN DESIGN AND DETAIL IS OUR PROPERTY AND MUST NOT BE USED EXCEPT IN CONNECTION WITH OUR WORK ALL RIGHTS OF DESIGN AND INVENTION ARE RESERVED THIS IS AN ELECTRONICALLY GENERATED DOCUMENT - DO NOT SCALE THIS PRINT				RFP	CAD FILE ss88470	SIZE B	DRAWING NO. SS88470
				DIST LB		PAGE 1 OF 1	REV. 9

HIGH VOLTAGE

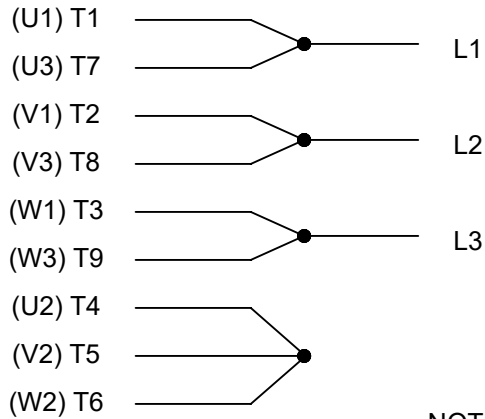


**THREE PHASE
DUAL VOLTAGE MOTOR**



**NOTE FOR FACTORY USE ONLY:
TO SURGE TEST FOR COMMON CONNECT:
HIGH VOLT: CONNECT P1 TO T1
THEN P2 TO L1
LOW VOLT: CONNECT P1 TO T1 & T7,
THEN P2 TO L1**

LOW VOLTAGE



VIEW OF TERMINAL END

NOTE: LEAD'S COLOR CAN BE YELLOW OR WHITE FOR MT2 PLANT

DRAWING REVISION T	REVISION BY ZR	DATE 01-14-2019		DRAWN BY SMC	Regal Beloit America, Inc.
ECO ECO-0159915	APPROVED BY DR	DATE 01-15-2019		DATE 05-13-1992	
ECO DESCRIPTION ADDED TERMINAL CONNECTION DIAGRAM				APPROVED BY TB	DESCRIPTION CONN DIAGRAM-INTERNAL 3 PHASE - DUAL VOLTAGE MOTOR
<small>COPYRIGHT REGAL BELOIT AMERICA, INC. ALL RIGHTS RESERVED. PROPRIETARY AND CONFIDENTIAL INFORMATION - THIS DOCUMENT IS THE PROPERTY OF REGAL BELOIT AMERICA, INC. ("OWNER") AND CONTAINS OWNER'S PROPRIETARY INFORMATION. ANY PERSON, CORPORATION OR OTHER FIRM RECEIVING IT IS DEEMED, BY RECEIVING IT, TO AGREE THAT IT, AND/OR ANY PART OF IT, SHALL NOT BE DISCLOSED TO ANY PERSON, CORPORATION OR OTHER ENTITY, DUPLICATED, AND/OR USED, EXCEPT AS EXPRESSLY APPROVED IN WRITING IN ADVANCE BY OWNER. THIS DOCUMENT SHALL BE RETURNED TO OWNER UPON REQUEST. IT MAY BE SUBJECT TO CERTAIN RESTRICTIONS UNDER APPLICABLE EXPORT CONTROL LAWS AND REGULATIONS.</small>			DATE 05-13-1992	MATERIAL	PROCESS/FINISH
			REFERENCE EE7308/EE7300	THIRD ANGLE PROJECTION	SIZE A

CERTIFICATION DATA SHEET

Model#: 213THTS8071 AP
 CONN. DIAGRAM: A-EE7308T
 OUTLINE: B-SS88470-875

WINDING#: K2134188 NONE 1
 ASSEMBLY: F1/F2 CAPABLE

TYPICAL MOTOR PERFORMANCE DATA

HP	KW	SYNC. RPM	F.L. RPM	FRAME	ENCLOSURE	KVA CODE	DESIGN		
7 1/2	5.60	1800	1775	213TC	TENV	L	INV		
PH	Hz	VOLTS	FL AMPS	START TYPE	DUTY	INSL	S.F	AMB°C	ELEVATION
3	60	230/460	21/10.5	INVERTER ONLY	CONTINUOUS	F3	1.0	40	3300
FULL LOAD EFF: 90.2		3/4 LOAD EFF: 90.2	1/2 LOAD EFF: 88.5	GTD. EFF	ELEC. TYPE	NO LOAD AMPS			
FULL LOAD PF: 75		3/4 LOAD PF: 68	1/2 LOAD PF: 55.5	88.5	SQ CAGE INV DUTY	11.6 / 5.8			
F.L. TORQUE		LOCKED ROTOR AMPS		L.R. TORQUE	B.D. TORQUE	F.L. RISE°C			
22.2 LB-FT		182 / 91		80 LB-FT 360	94 LB-FT 423	85			
SOUND PRESSURE @ 3 FT.		SOUND POWER		ROTOR WK*2	MAX. WK*2	SAFE STALL TIME	STARTS /HOUR	APPROX. MOTOR WGT	
62 dBA		72 dBA		1.05 LB-FT*2	0 LB-FT*2	0 SEC.	0	256 LBS.	

EQUIVALENT WYE CKT.PARAMETERS (OHMS PER PHASE)

R1	R2	X1	X2	XM
0.57456	0.46116	1.94292	2.9862	43.848
RM	ZREF	XR	TD	TD0
1814.4	37.8	4.1	0.0145	0.27

*** SUPPLEMENTAL INFORMATION ***

DE BRACKET TYPE	ODE BRACKET TYPE	MOUNT TYPE	ORIENTATION	SEVERE DUTY	HAZARDOUS LOCATION	DRIP COVER	SCREENS	PAINT
C-FACE	BRAKE AND ENCODER	RIGID	HORIZONTAL	FALSE	NONE	FALSE	NONE	BLUE (ENAMEL)
BEARINGS		GREASE	SHAFT TYPE	SPECIAL DE	SPECIAL ODE	SHAFT MATERIAL	FRAME MATERIAL	
DE	OPE							
BALL	BALL	POLYREX EM	T	NONE	NONE	1045 HOT ROLLED (C-204)	CAST IRON	
6309	6307							

THERMO-PROTECTORS				THERMISTORS		CONTROL		SPACE /n HEATERS	
THERMOSTATS	PROTECTORS	WDG RTDS	BRG RTDS						
TSTATS (NIC)	NOT	NONE	NONE	NONE	NONE	FALSE	NONE	NONE	VOLTS

If Inverter equals NONE, contact factory for further information

* N	INVERTER TORQUE: CONSTANT 2000.1
O	INV. HP SPEED RANGE: 2.0 X BASE SPEED
T	ENCODER: PROVISIONS ONLY
E	NORTHSTAR SL85
S	NONE NONE PPR
*	BRAKE: REGAL SUPPLIED AND MOUNT
	NONE

STEARNNS	P/N 66378-34
87,000	NEMA 2
35 FT-LB	208-230/460-190/380 V
60/50 Hz	

DATE: 06/20/2017 08:56:04 AM

FORM 3531 REV.3 02/07/99

** Subject to change without notice.

MARATHON ELECTRIC CORPORATION

TYPICAL PERFORMANCE CURVE for AC MOTOR

Customer CATALOG

Curve at

460

Volts

HP 7.50

PHASE 3

Model No 213THTS8071

60

HZ

VOLTS 230/460

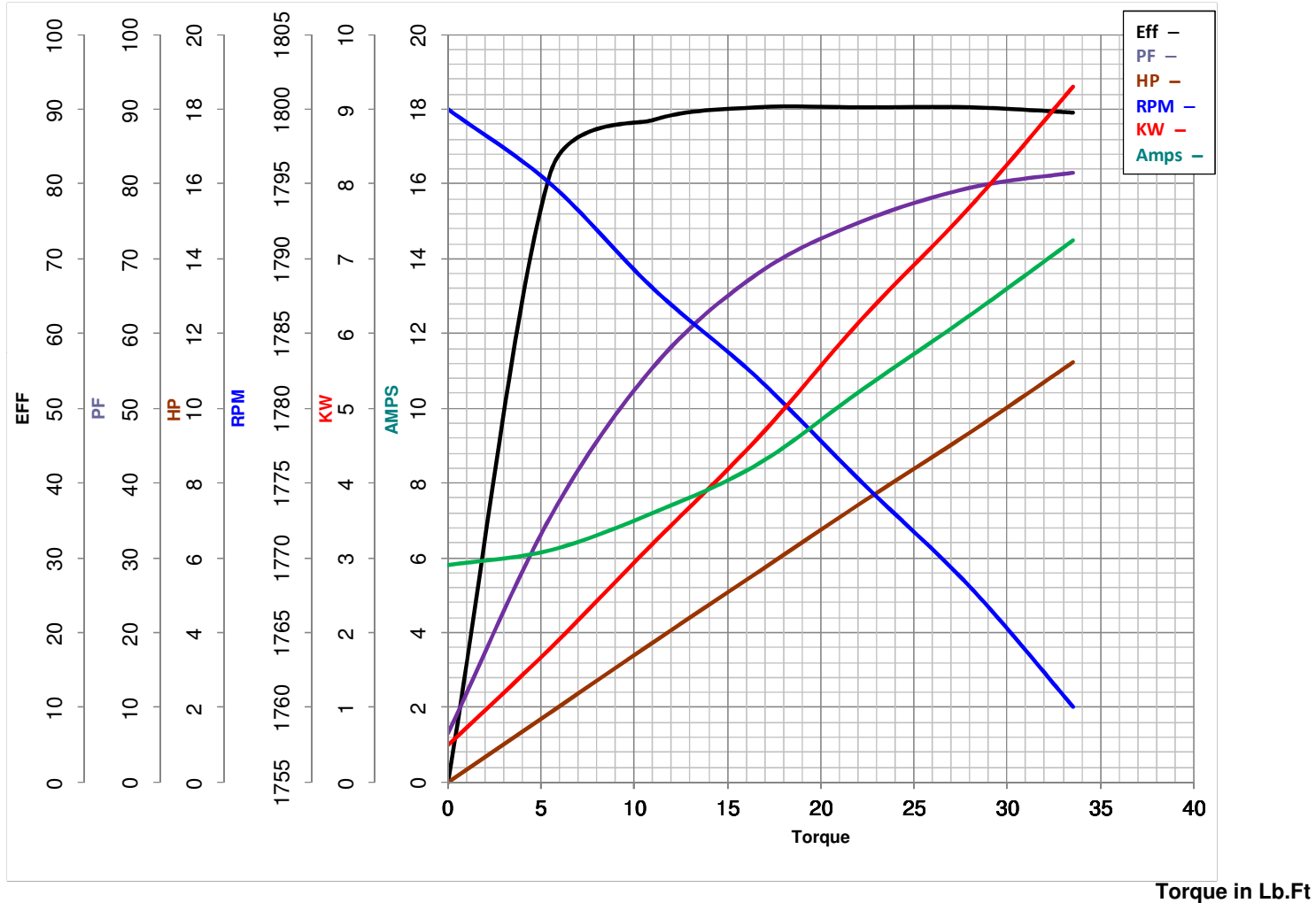
7.5

HP

Catalog No Y990

HZ 60

RPM 1775



Torque in Lb.Ft

FL TORQUE 22.2 Lb.Ft
 BD TORQUE 94.0 Lb.Ft
 LR TORQUE 80 Lb.Ft

FL AMPS 21/10.5
 PU TORQUE 75.0 Lb.Ft
 LR AMPS 91

WINDING K2134188-1

Prepared By SRIKANTH

Date 6/21/2017